

# CHED UPDATES

**CHED Regional Office IV**

**Dr. Rogelio T. Galera, Jr., CESO III  
Director IV**



# Compelling Question

*with your*

## Truthful Response



1. Are you satisfied with the services provided by the CHED Regional Office over the past few months?
2. What improvements or positive changes have you or your institution noticed?
3. What improvements or positive changes are you or your institution expecting?





# CHED CALABARZON D-A-T-O-S

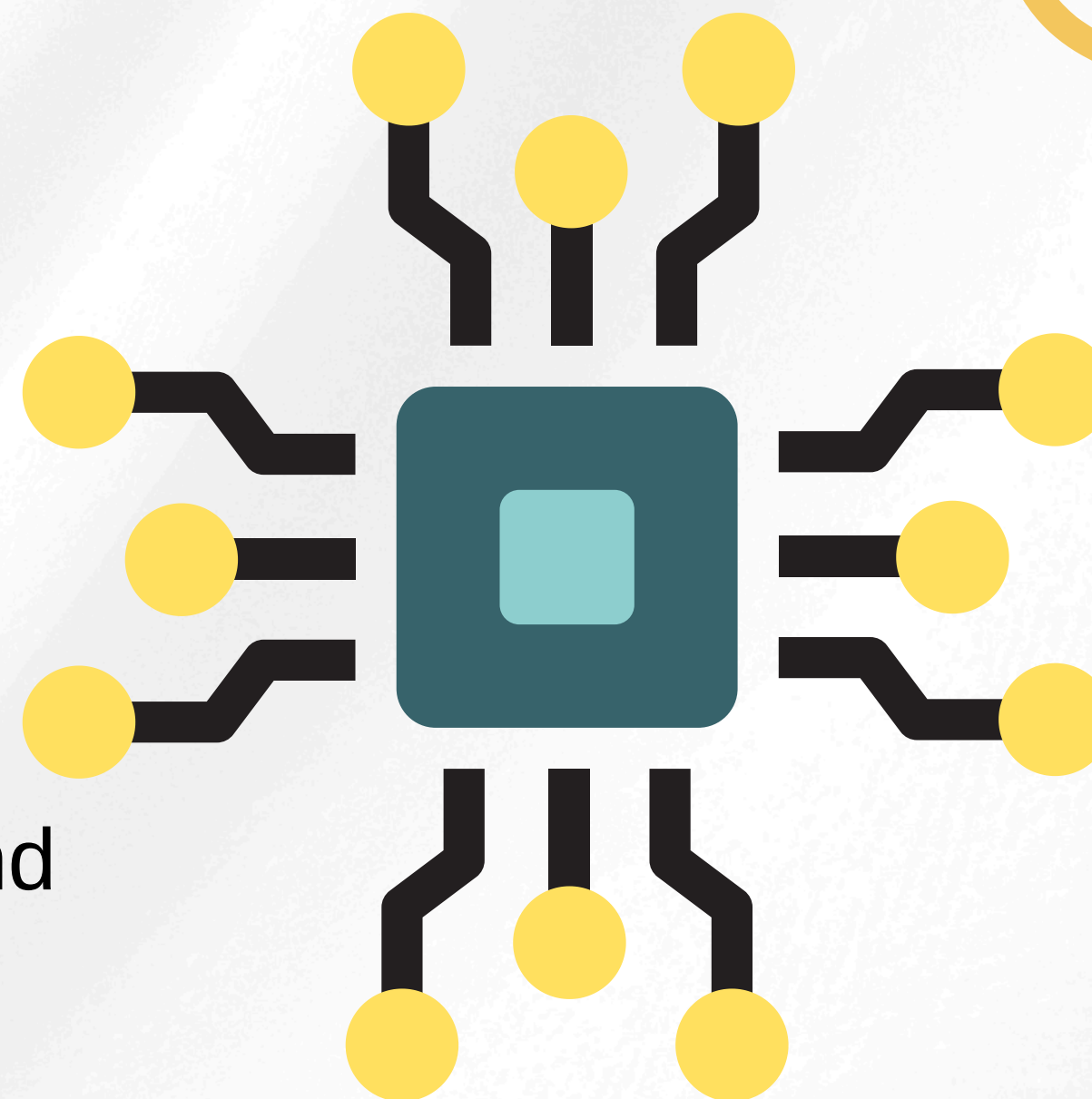
**D**ata Management

**A**nalytics, with streamlined

**T**ransactions, insightful


**O**perations Dashboards, and

**S**mart Productivity Tools



# Visit the CHED GIS Dashboard

GOVPH Home About Us ▾ Announcements ▾ Resources ▾ Events ▾ Directory ▾ Search ...

 Republic of the Philippines  
OFFICE OF THE PRESIDENT  
COMMISSION ON HIGHER EDUCATION

Financial Assistance ▾ Grants ▾ ETEEAP Foreign Scholarships and Training Programs List of Higher Education Institution ▾ **CHED GIS Dashboard**




## Announcements

2025 Archive

Call for Nominations for the Chairperson and Members of the Technical panels for Non-Conventional Programs  
CHED Administrative Order No. 9, series of 2019 – Revised Policies and Guidelines in the Reconstitution of Technical Panels for Various Disciplines/Program Areas of the Commission on Higher Education

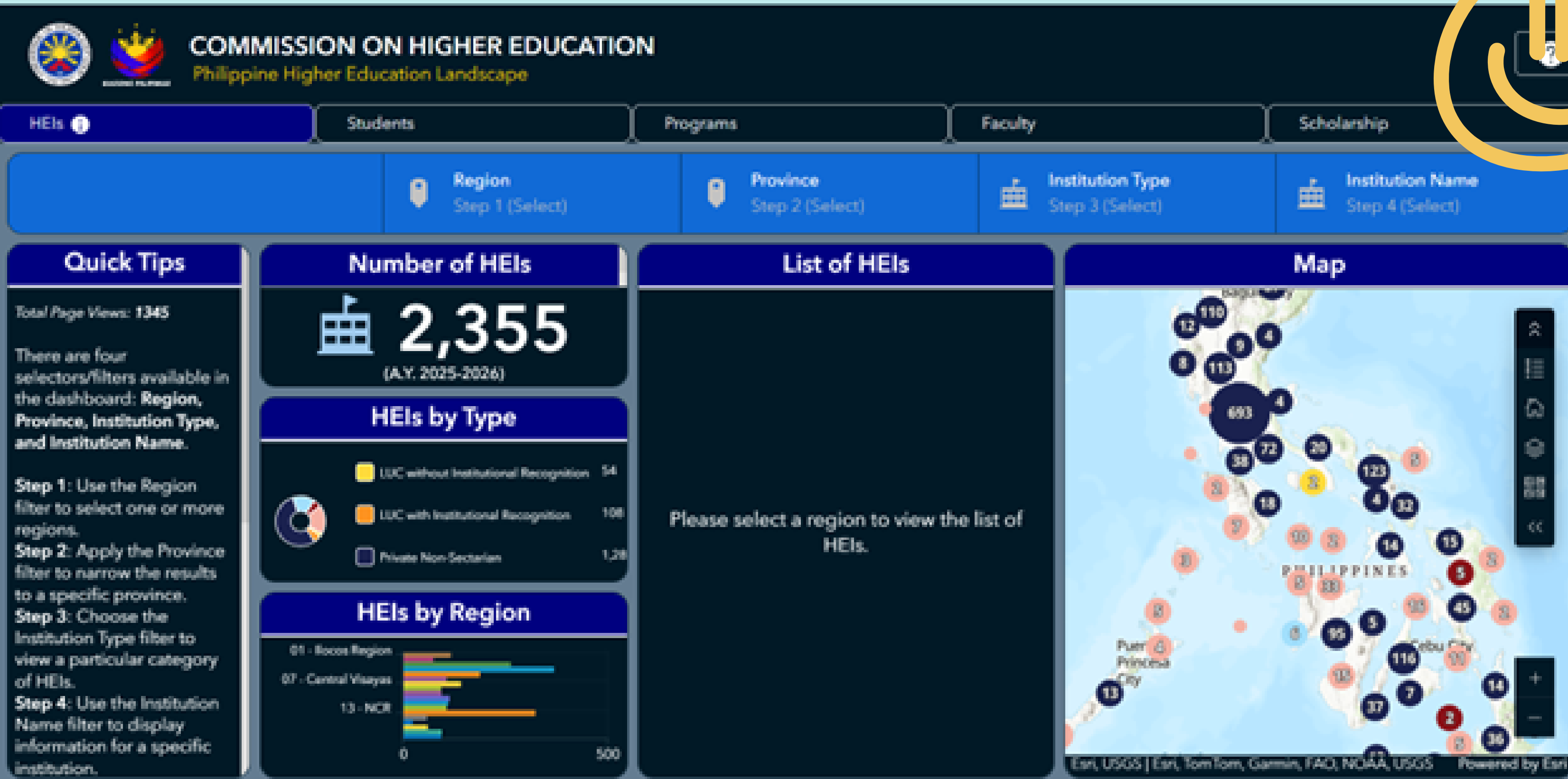
Sitemap  
Privacy Notice

Higher Education Development Center Building,  
C.P. Garcia Ave, Diliman, Quezon City, Philippines  
info@ched.gov.ph / (02) 8441-1260



# Visit the CHED GIS Dashboard



# The CHED e-CAV System



**CHED OneTouch**  
INTEGRATED SYSTEMS AND SERVICES

Login

Sign up

[Home](#)

[Requirements](#)

[FAQs](#)

[Verification](#)

[Terms of Use](#)

[Privacy Policy](#)

[Contact Us](#)

[Announcements](#)

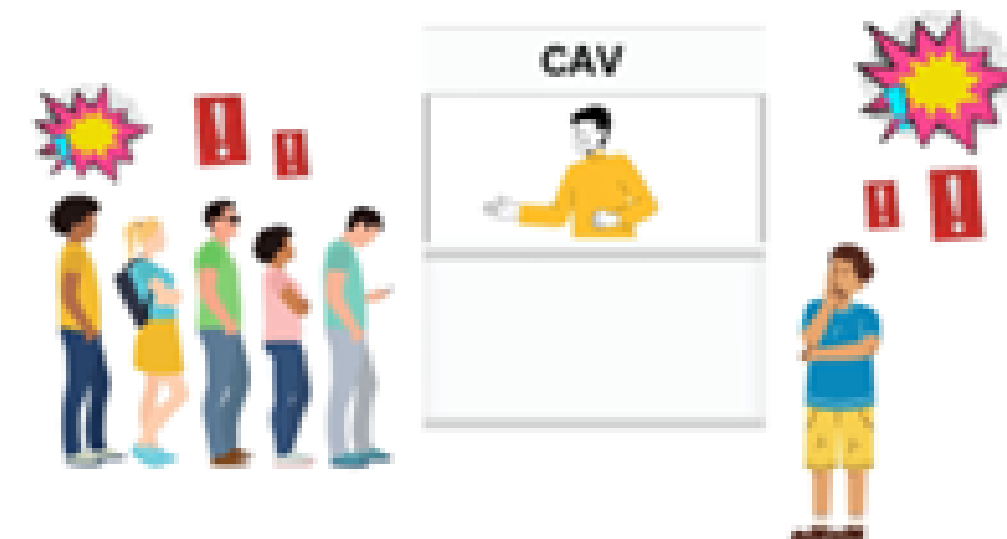
## Apply for your eCAV

The Easy and Convenient Way!

eCAV, short for Electronic Certification, Authentication, and Verification, is a modern solution for the official and secure verification of higher education academic records.

[Apply now →](#)

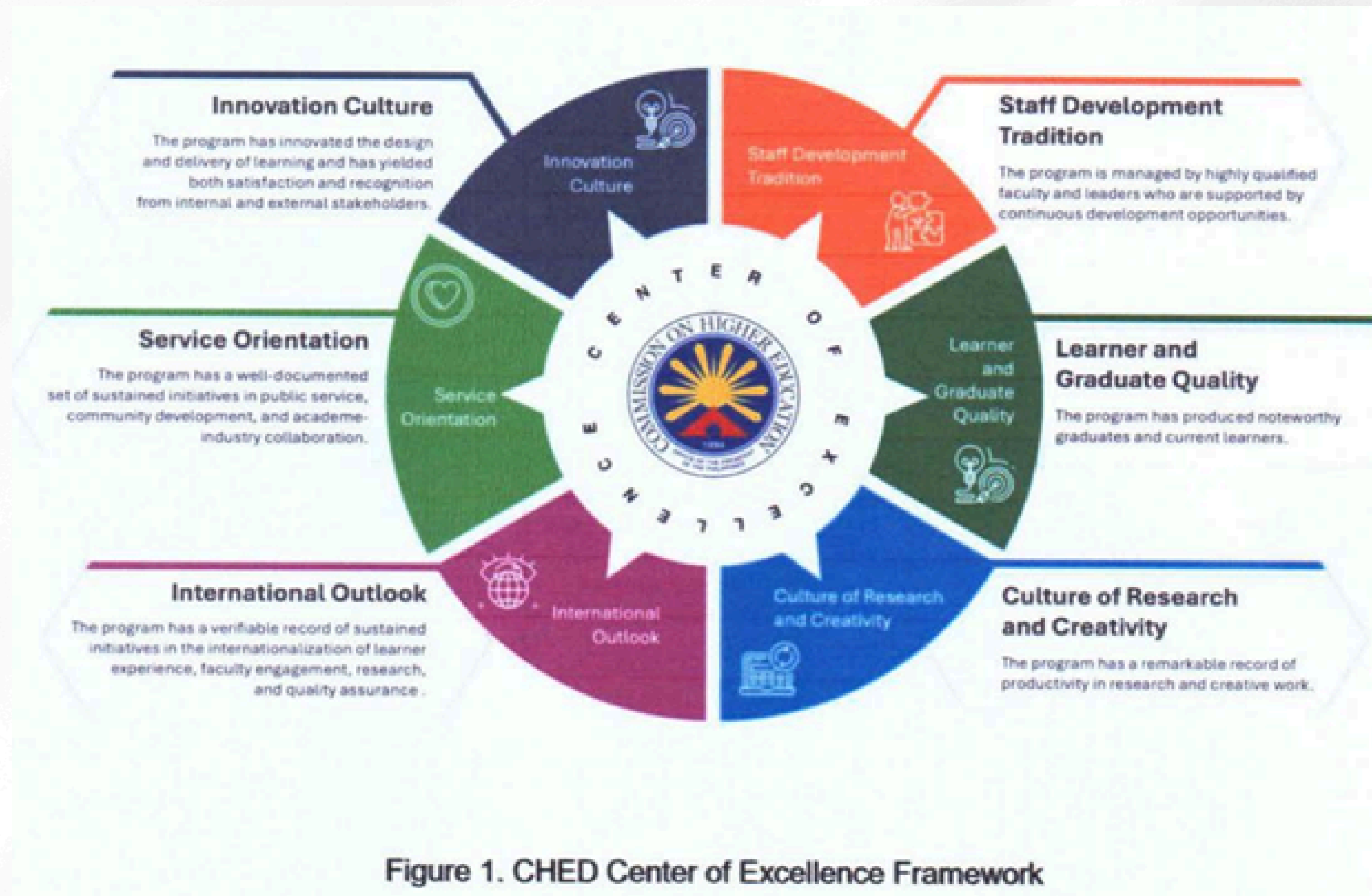
- ✗ Travel
- ✗ Cost
- ✗ Time
- ✗ Frustration and limited service
- ✗ No tracking of the application status.
- ✗ Multiple trips to regional offices
- ✗ On-site payments only.
- ✗ Long queues





# CMO No. 10, s. 2025

## Policies and Standards on Centers of Excellence





Republic of the Philippines  
**OFFICE OF THE PRESIDENT**

**COMMISSION ON HIGHER EDUCATION**

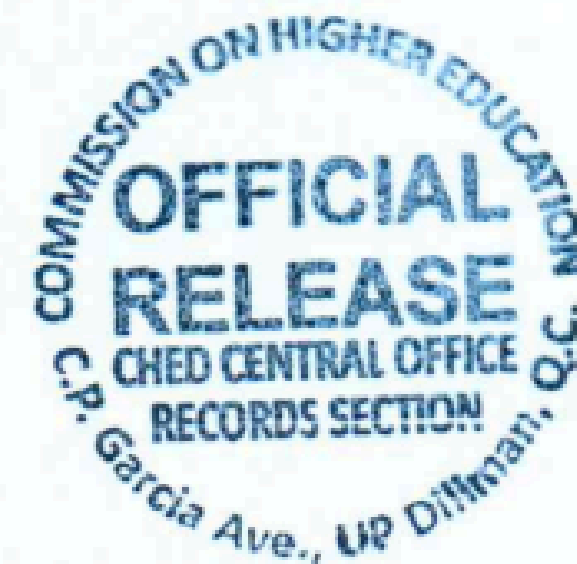


**BAGONG PILIPINAS**

**CHED MEMORANDUM ORDER (CMO)**

No. 02

Series of 2025

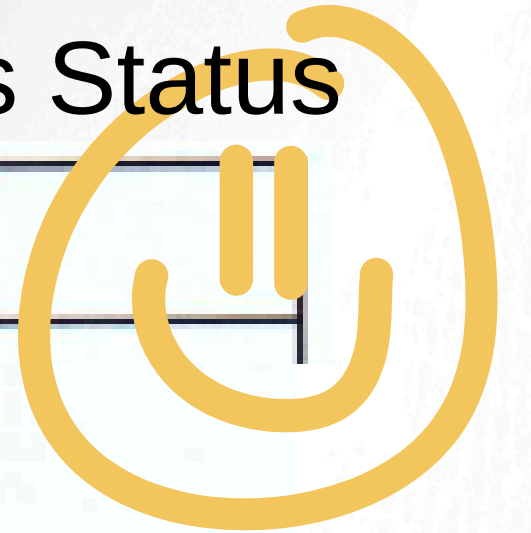


**SUBJECT : UPDATED LIST OF PRIVATE HIGHER EDUCATION  
INSTITUTIONS GRANTED AUTONOMOUS AND DEREGULATED  
STATUS BY EVALUATION**



## Private Higher Education Institutions (HEIs) granted Autonomous Status

Seq	Region	Name and Location of HEI
13.	IV	<b>Adventist University of the Philippines</b> Puting Kahoy, Silang, Cavite
14.	IV	<b>Colegio de San Juan de Letran Calamba</b> Ipil-Ipil St., Brgy. Bucal, Calamba City, Laguna
15.	IV	<b>Lyceum of the Philippines - Laguna, Inc.</b> Km 54 National Highway, Makiling, Calamba, Laguna
16.	IV	<b>Lyceum of the Philippines University - Batangas, Inc.</b> P. Herrera St. cor. Dona Aurelia St., Capitol Site, Kumintang Ibaba, Batangas City
17.	IV	<b>Lyceum of the Philippines University - Cavite</b> Governor's Drive, Brgy. Manggahan, General Trias City, Cavite
18.	IV	<b>Manuel S. Enverga University Foundation</b> Site, Ibabang Dupay, Lucena City, Quezon



Seq	Region	Name and Location of HEI
18.	IV	<b>Manuel S. Enverga University Foundation</b> Site, Ibabang Dupay, Lucena City, Quezon
19.	IV	<b>Mapúa Malayan Colleges Laguna</b> Pulo Diezmo Road, Cabuyao City, Laguna
20.	IV	<b>Our Lady of Fatima University - Antipolo Campus</b> Km 23 Sumulong Highway, Brgy. Sta. Cruz, Antipolo City, Rizal
21.	IV	<b>Saint Michael's College of Laguna</b> Old National Road, Platero, City of Biñan, Laguna
22.	IV	<b>St. Dominic College of Asia, Inc.</b> Emilio Aguinaldo Highway St., Dominic Complex, City of Bacoor, Cavite
23.	IV	<b>University of Batangas</b> Hilltop Road, Kumintang Ibaba, Batangas City, Batangas
24.	IV	<b>University of Perpetual Help System Laguna</b> University of Perpetual Help - Dr. Jose G. Tamayo Medical University (Annex) Old National Hi-way, City of Biñan, Laguna





## Private Higher Education Institutions (HEIs) granted Deregulated Status

Seq	Region	Name and Location of HEI
3.	IV	<b>De La Salle Medical and Health Sciences Institute</b> City Of Dasmarinas, Cavite
4.	IV	<b>Emilio Aguinaldo College - Cavite</b> Gov. D. Mangubat Avenue, Burol Main, City of Dasmariñas, Cavite
5.	IV	<b>University of Perpetual Help System DALTA - Calamba Campus</b> National Highway, Brgy. Paciano Rizal, Calamba City, Laguna
6.	IV	<b>University of Perpetual Help System DALTA - Molino Campus **</b> Salawag-Zapote Road, Bacoar City, Cavite



# CMO No. 15, s. 2025

## UPDATED POLICIES AND GUIDELINES FOR THE GRANT OF AUTONOMOUS AND DEREGULATED STATUS TO PRIVATE HIGHER EDUCATION INSTITUTIONS



*Table 1. Prerequisites for the Evaluation of Autonomous and Deregulated Applications*

Prerequisites	Scope of Evaluation
A. Government Authorization	All program offerings were issued appropriate authorization by the CHED including programs delivered via the alternative modes of delivery.
B. Institutional Quality Assurance	PHEI has a functional Institutional Quality Management System (IQMS)
C. Tradition of integrity and untarnished reputation	Established and documented processes and systems for addressing administrative issues, disciplinary cases, crises, and other mandatory procedures based on existing laws.
D. Minimum Faculty Qualifications	<p>All permanent faculty members have master's degrees.</p> <p>All faculty members handling doctoral programs have doctorates.</p>





# CMO No. 15, s. 2025

## UPDATED POLICIES AND GUIDELINES FOR THE GRANT OF AUTONOMOUS AND DEREGULATED STATUS TO PRIVATE HIGHER EDUCATION INSTITUTIONS



*Table 2. Criteria for the Grant of Autonomous and Deregulated Status*

Criteria	Maximum Point Allocation
A. Commitment to Program Excellence	30
B. Excellence in Instruction, Scholarly Works, and Community Engagements	40
C. Institutional Quality and Excellence	30



# CMO No. 10, s. 2025

## Policies and Standards on Centers of Excellence



### III. PRE-SELECTION CRITERIA

1. The pre-selection of degree programs that will qualify to undergo evaluation as a COE shall be based on two criteria.
2. The first criteria is the conferment of a valid Government Recognition (for private HEIs) or Certificate of Program Compliance (for public HEIs) for the degree program.
3. The second criteria is the conferment of a Level II program accreditation from any CHED-recognized agency or an equivalent international distinction/award.

### IV. EVALUATION CRITERIA

1. The COEs will be evaluated based on the seven descriptors and attributes.
2. Each descriptor that functions as a criterion will have specific indicators, required evidence, and evaluation rubrics.
3. The distribution of points per descriptor is shown in Table 1. It is not necessary to obtain



# CMO No. 10, s. 2025

## Policies and Standards on Centers of Excellence



Table 1. Evaluation Criteria and Indicators

Criterion	Value	Indicators (max of 5 points per indicator)
<b>Innovation Culture</b>	20 points	<ol style="list-style-type: none"><li>1. Presence of graduate degree complement</li><li>2. Innovation in program design</li><li>3. Innovation in learning delivery</li><li>4. Learner satisfaction mechanism</li><li>5. Graduate satisfaction mechanism</li><li>6. Number of awards/distinctions for program design and learning delivery</li></ol>
<b>Culture of Research and Creativity</b>	20 points	<ol style="list-style-type: none"><li>1. Percentage of faculty currently engaged in research</li><li>2. Percentage of faculty currently engaged in creative work</li><li>3. Number of completed research</li><li>4. Number of completed creative work</li><li>5. Number of published and awarded research</li><li>6. Number of published and awarded creative work</li><li>7. Number of patented innovations, commercialized knowledge products, and related outputs</li></ol>





# CMO No. 10, s. 2025

## Policies and Standards on Centers of Excellence



<b>International Outlook</b>	20 points	<ol style="list-style-type: none"><li>1. Participation in international ranking or related QA initiative</li><li>2. Internationalization of student experience</li><li>3. Internationalization of research</li><li>4. Internationalization of faculty</li><li>5. Number of international awards/distinctions for the program</li></ol>
<b>Staff Development Tradition</b>	20 points	<ol style="list-style-type: none"><li>1. Percentage of doctoral degree holders</li><li>2. Well-functioning performance management system</li><li>3. Well-functioning faculty development program (including promotion, succession and retention)</li><li>4. Well-functioning leader development program (including promotion, succession and retention)</li><li>5. Number of faculty who benefited from the faculty development program</li><li>6. Number of faculty members and leaders who received awards/distinctions</li></ol>
<b>Learner and Graduate Quality</b>	10 points	<ol style="list-style-type: none"><li>1. Presence of a graduate tracking/employability mechanism</li></ol>



# CMO No. 10, s. 2025

## Policies and Standards on Centers of Excellence



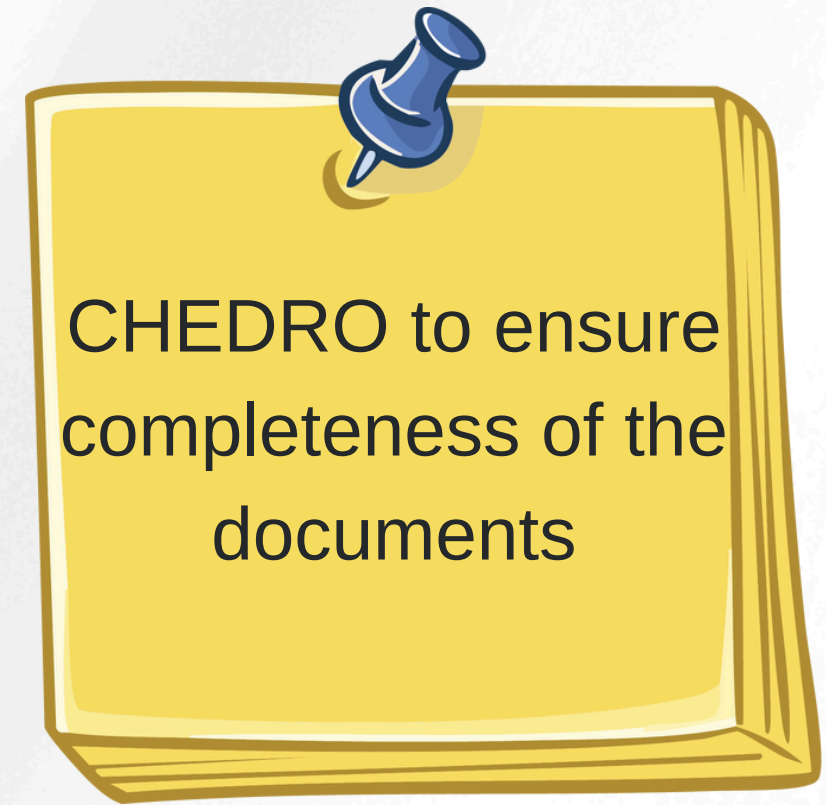
		<ol style="list-style-type: none"><li>2. Average of five years of performance in the licensure examination</li><li>3. Number of licensure examination top notchers</li><li>4. Number of graduates in leadership roles</li><li>5. Number of graduates with public recognition as influencers, catalysts, and trailblazers</li><li>6. Number of awards/distinctions for undergraduate learners</li></ol>
<b>Service Orientation</b>	10 points	<ol style="list-style-type: none"><li>1. Number of completed and high-impact initiatives in public service</li><li>2. Number of completed and high-impact initiatives in academe-industry relations</li><li>3. Number of completed and high-impact initiatives in community development</li><li>4. Number of awards/distinctions in public service, academe-industry relations, and community development</li></ol>



# ENDORSEMENT OF AMENDED BY-LAWS

Amendments in the institutions' By-Laws :

- Change in institutional name
- Increase in capitalization
- Change in board members or incorporators
- Change in institutional location
- Or any changes in the institutions' By Laws

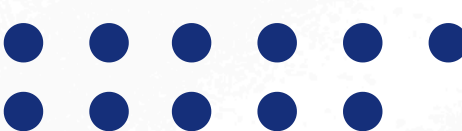


HEI submits  
amended  
By-Laws to  
CHEDRO

CHEDRO  
endorses to  
CHED Legal  
and Legislative  
Service (LLS)

LLS endorses  
to SEC

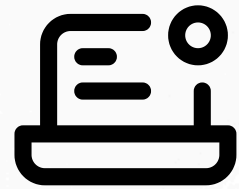
SEC releases  
to HEI





# CMO NO. 41, S. 2016 OVERVIEW

## Policies, Standards, and Guidelines Governing the Sale, Merger, or Consolidation of Private HEIs



- Sale of higher educational institutions (HEIs) shall require the endorsement and/or approval of the Commission on Higher education
- In accordance with the policies, standards and guidelines herein set forth. It shall also be in accordance with other pertinent or applicable laws.



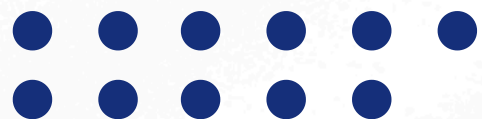
- Merger or consolidations of higher education institutions (HEIs) shall require endorsement and/or approval of the Commission on Higher Education and the Securities and Exchange Commission.
- The merger or consolidation shall be in accordance with the applicable rules under the Corporation Code, the Competition Policy and other pertinent or applicable laws, rules and regulations.



- Foreign HEIs or education service providers operating in the Philippines shall also be covered by these rules and regulations.



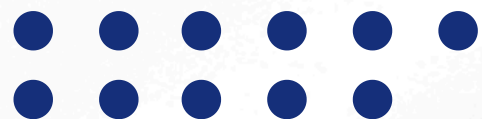
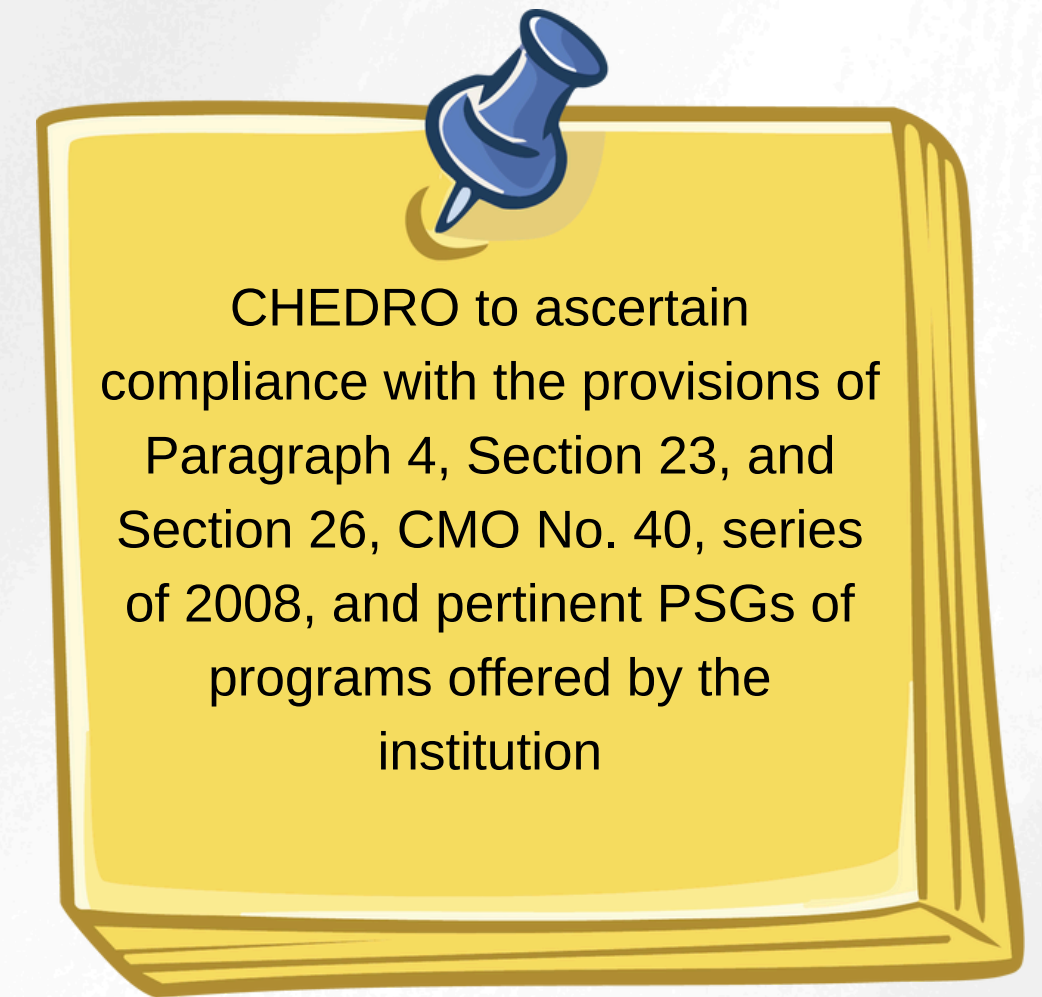
All private HEIs including their campuses and branches are covered under this CHED Memorandum Order



# TRANSFER OF INSTITUTIONAL SITE

Section 23, CMO 40, s. 2008 Manual of Regulations for Private Higher Education of 2008

- ✓ The new site/location is better than the previous location;
- ✓ No new program shall be offered without government authority immediately after the transfer;
- ✓ All the minimum requirements for its programs offered before the transfer are maintained subject to verification by the Commission; and
- ✓ The Commission is duly informed before the transfer.





# Meet our New CHED Chairperson

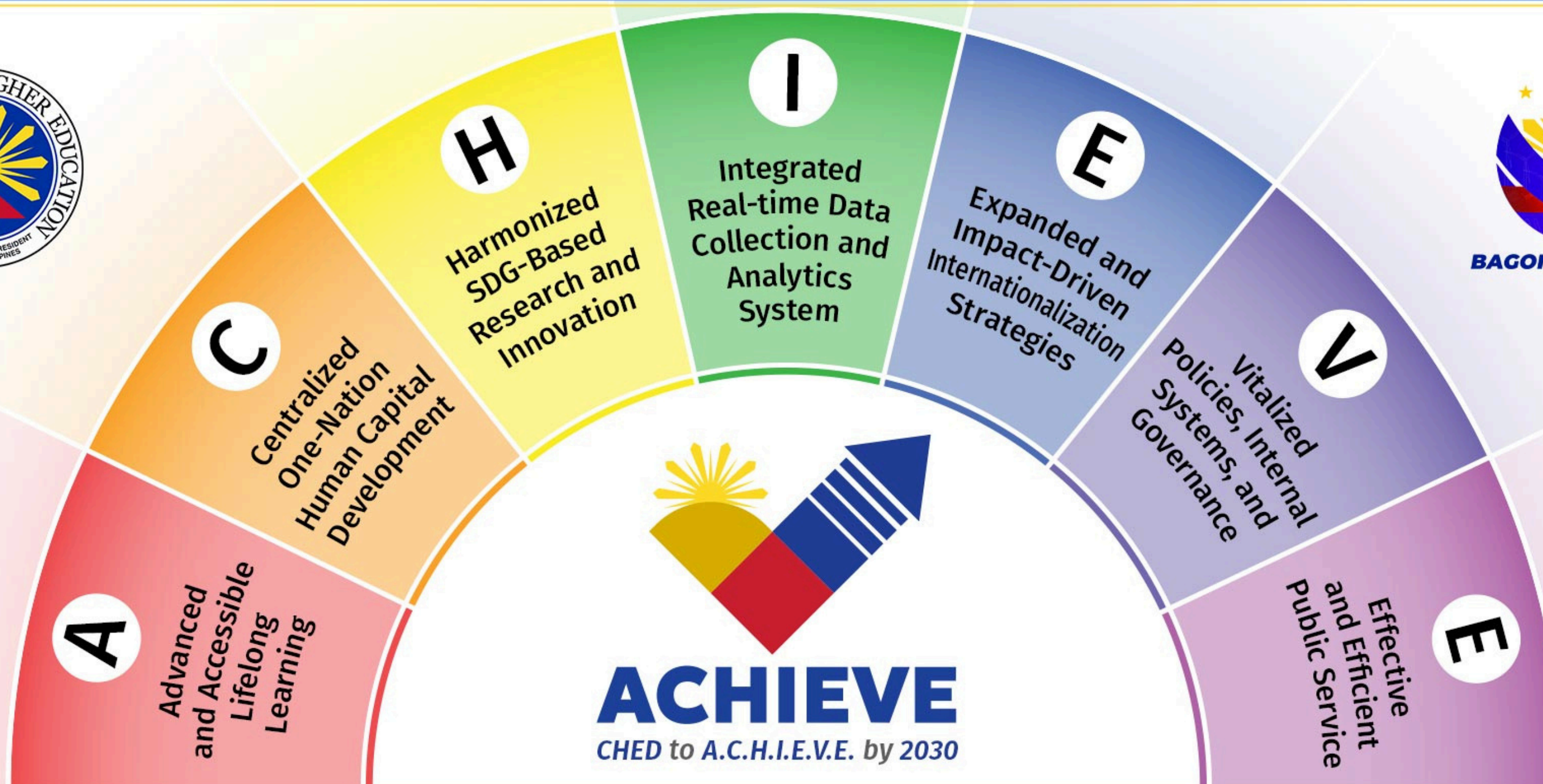


- She is a Biologist
- With Masters Degree from University of the Philippines
- PhD in Agricultural Science from Gifu University and Shizouka University in Japan
- Former President of Mariano Marcos State University
- Former CHED Commissioner

**Dr. Shirley Castaneda Agrupis**









# THE ACHIEVE FRAMEWORK OF CHED CHAIRPERSON DR. AGRUPIS

- **A**dvanced and Accessible Lifelong Learning: To ensure education is accessible to all, not just a privilege.
- **C**entralized One-Nation Human Capital Development: A comprehensive plan for developing human capital across the nation.
- **H**armonized SDG-based Research and Innovation Agenda: To align research and innovation efforts with the United Nations Sustainable Development Goals.
- **I**ntegrated Real-Time Data Collection and Analytics: To improve decision-making with data-driven insights.
- **E**xpanded and Impact-Driven Internationalization Strategies: To foster global connections and competitiveness with a focus on measurable impact.
- **V**italized Policies, Internal Systems, and Governance: To strengthen CHED's internal operations and the broader higher education governance.
- **E**ffective and Efficient Public Service: To ensure efficient delivery of services to students, educators, and institutions.



*The ACHIEVE framework outlines the priorities for higher education under the administration of President Ferdinand R. Marcos Jr.*





# THE ACHIEVE FRAMEWORK OF CHED CHAIRPERSON DR. AGRUPIS



**Advanced and Accessible Lifelong Learning**



**Centralized One-Nation Human Capital Development**



**Harmonized SDG-based Research and Innovation Agenda**



**Integrated Real-Time Data Collection and Analytics**



**Expanded and Impact-Driven Internationalization Strategies**



**Vitalized Policies, Internal Systems, and Governance**



**Effective and Efficient Public Service**



The ACHIEVE framework outlines the priorities for higher education under the administration of President Ferdinand R. Marcos Jr.





# GOALS OF THE ACHIEVE AGENDA

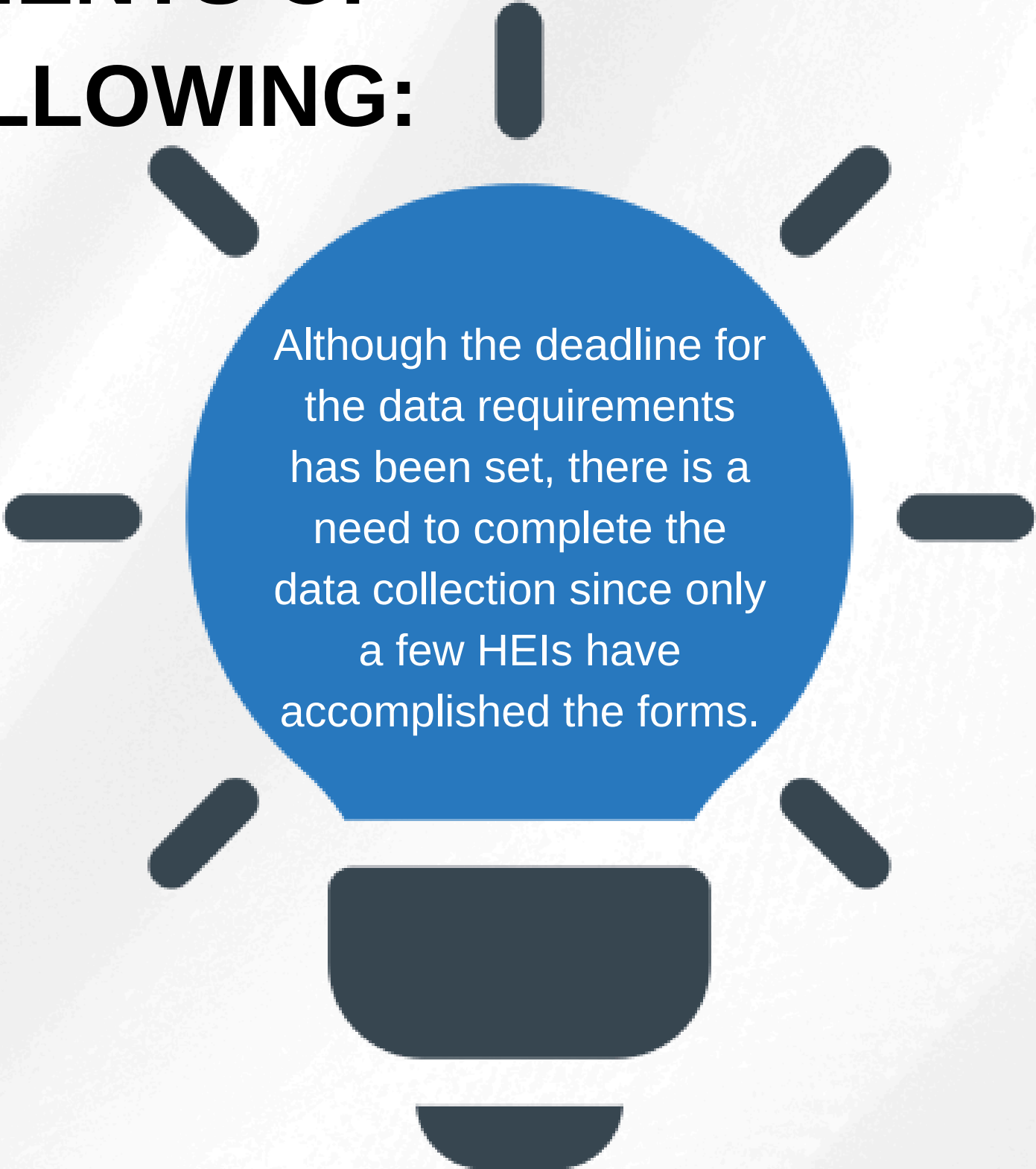


- ✓ To create a more holistic and holistic development of Filipino learners in local and global contexts.
- ✓ To foster academic programs responsive to labor market needs and address the rise in graduate unemployment.
- ✓ To enhance the digital transformation of higher education in the Philippines.
- ✓ To build strong partnerships between government agencies and private sectors for industry collaboration and workforce development.



# REMINDER TO THE DATA REQUIREMENTS OF CHED CENTRAL OFFICE ON THE FOLLOWING:

- Foreign Student
- Credit Transfer System
- ETEEAP
- Ladderized Education Program
- Guidance Counselor
- Librarian
- Physical Space
- Indigenous People
- Autonomous-Deregulated
- Board Passing Rate
- ISO
- Accreditation



Although the deadline for the data requirements has been set, there is a need to complete the data collection since only a few HEIs have accomplished the forms.







Republic of the Philippines  
OFFICE OF THE PRESIDENT

COMMISSION ON HIGHER EDUCATION



**MEMORANDUM FROM THE OFFICE OF THE CHAIRPERSON**

**TO : PRESIDENTS AND OFFICERS-IN-CHARGE OF PUBLIC AND PRIVATE  
HIGHER EDUCATION INSTITUTIONS**

**COMMISSION ON HIGHER EDUCATION (CHED) CENTRAL AND  
REGIONAL OFFICE DIRECTORS AND OFFICERS-IN-CHARGE**

**SUBJECT: REITERATION OF THE PROVISIONS OF CHED MEMORANDUM  
ORDER (CMO) NO. 04, S. 2023 (UPDATED GUIDELINES ON ONSITE  
LEARNING) AND CMO NO. 32, S. 2021 (MONITORING GUIDELINES ON  
THE IMPLEMENTATION OF FLEXIBLE LEARNING)**



Please like and follow our Facebook Page





Please CONTACT us!

## CONTACT US

1

**For official communications and requests**

(043) 727-2764  
chedro4a@ched.gov.ph

2

**For concerns about the Office of the Regional Director**

09561960471  
chedro4a@ched.gov.ph

## CONTACT US

3

**For Student Financial Assistance Programs (StuFAPs)**

re: Inquiry, submission of requirements and follow-ups  
ofr CMSP, ACEF-GIAHEP, Estatskolar, MSRS, SIDA-SGP.  
CoScho and MTP-SP

09271486267  
chedro4stufaps@ched.gov.ph





Please CONTACT us!

## CONTACT US

4

### **For Unified Student Financial Assistance System for Tertiary Education (UniFAST)**

re: inquiry, submission of requirements and follow-ups on Free Higher Education, Tertiary Education Subsidy (TES), and Tulong-Dunong Program (TDP)

**09611509452**  
**unifastro4@ched.gov.ph**

## CONTACT US

5

### **For Scholarships for Instructors' Knowledge Advancement Program (SIKAP) concerns**

**09565510256**  
**sikapgrant.r4@ched.gov.ph**

6

### **For eCAV concerns**

**09544689667**  
**ched4a.cav@ched.gov.ph**



Please CONTACT us!

## CONTACT US

7

**For Special Order (S.O.) concerns**

09544689667  
ched4a.so@ched.gov.ph

8

**For technical concerns**

re: Permit/Recognition/COPC, curriculum revision,  
tuition fee, student services, academic matters

09456453630  
ched4techdiv@ched.gov.ph

## CONTACT US

9

**For COMPLAINTS and other  
academic concerns such as queries  
on transcript of records, diplomas,  
grades, etc.**

09456453630  
ro4.8888@ched.gov.ph

10

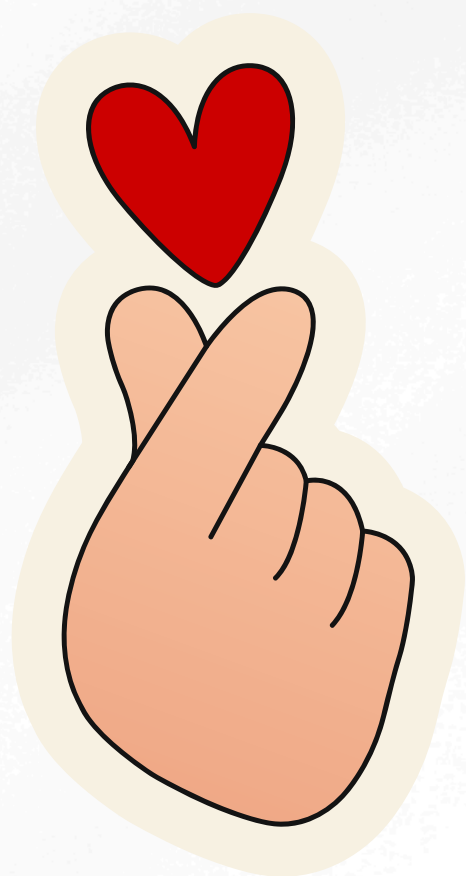
**For inquiry on Higher Education data  
and NSTP Serial Number**

09456453630  
ched4mis@ched.gov.ph





Please CONTACT us!



**CONTACT US**

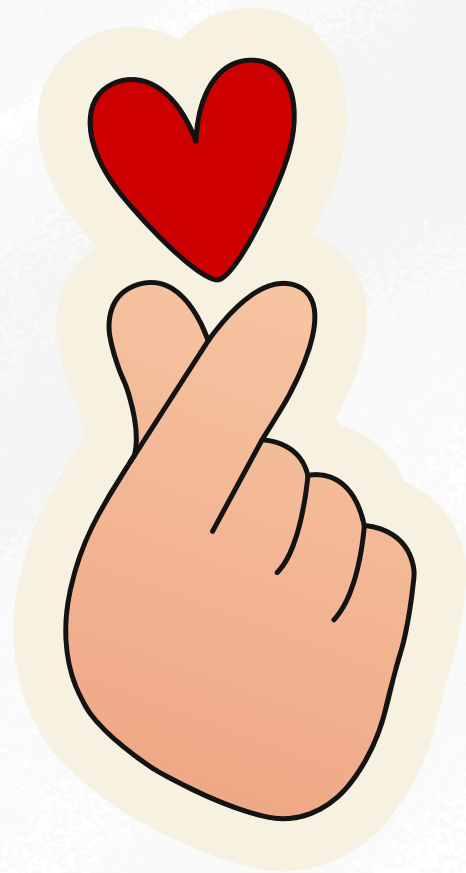
**11** For inquiry on fees, charges,  
payments and releases of checks

**09912613406**  
**ched4.cashierunit@ched.gov.ph**

   
**COMMISSION ON HIGHER EDUCATION**  
Regional Office IV







Thank you for Listening

